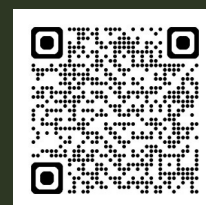




# CATALOGUE OF AGRICULTURAL MACHINERY

YEARS OF TRADITION, QUALITY AND TRUST

[www.pom.com.pl](http://www.pom.com.pl)





The history of POM Augustów dates back to 1955. POM was established to support agricultural production cooperatives and oversee group farming. In 1997 an employee-owned company was founded under the name Pracowniczy Ośrodek Maszynowy w Augustowie Sp. z o.o., formed by the entire staff and management of the enterprise.

The company`s products are available at over one hundred sales points throughout the country. POM Augustów exports its products to numerous countries, including: Germany, Austria, France, Hungary, Italy, the Netherlands, Finland, Iceland, Denmark, Switzerland, Croatia, Spain, Sweden, the Czech Republic, Bulgaria, Slovakia, Slovenia, Iceland, Lithuania, Latvia, Belarus, Ukraine, Romania, Moldova, Serbia, Estonia, North Macedonia and Kazakhstan.

For over more than 70 years of operation, thousands of customers have placed their trust in us. Thanks to modern technologies, team training and market research, we continuously improve our products.

**POM Augustów – proudly supporting Polish agriculture!**

## TRACTOR DRIVEN SUCTION AND FORCE PNEUMATIC CONVEYORS

Suction and force pneumatic conveyors are used for transporting grain horizontally and vertically. They are also perfectly suited for conveying other granulated materials.

| <b>T 480 with five stage fan</b> |                |
|----------------------------------|----------------|
| <b>Standard equipment</b>        |                |
| Dust removal system              |                |
| Hydraulically folded discharge   |                |
| Flexible polyurethane hose       |                |
| <b>Technical specification</b>   |                |
| Conveyor capacity*               | up to 43,5 t/h |
| Max. transport distance          | 80 m           |
| Pipe diameter                    | 160 mm         |
| PTO speed                        | 1000 rpm       |
| Power demand for PTO             | min. 90 kW     |



| <b>T 470 with four stage fan</b> |              |
|----------------------------------|--------------|
| <b>Standard equipment</b>        |              |
| Dust removal system              |              |
| Hydraulically folded discharge   |              |
| Flexible polyurethane hose       |              |
| <b>Technical specification</b>   |              |
| Conveyor capacity*               | up to 35 t/h |
| Max. transport distance          | 80 m         |
| Pipe diameter                    | 160 mm       |
| PTO speed                        | 1000 rpm     |
| Power demand for PTO             | min. 62 kW   |



| <b>T 449, T 449/1 with three stage fan</b>                |              |
|---|--------------|
| <b>Standard equipment</b>                                 |              |
| Hydraulically folded discharge Flexible polyurethane hose |              |
| <b>Technical specification</b>                            |              |
| Conveyor capacity*  | up to 25 t/h |
| Max. transport distance                                   | 70 m         |
| Pipe diameter   | 160 mm       |
| PTO speed   | 540 rpm      |
| Power demand for PTO                                      | min. 45 kW   |



| <b>T 450/1 with two stage fan</b>                      |              |
|--|--------------|
| <b>Standard equipment</b>                              |              |
| Flexible polyurethane hose with suction nozzle + clamp |              |
| 160mm Pipe 2m + clamp 160mm Bend 900 + clamp 160mm     |              |
| <b>Technical specification</b>                         |              |
| Conveyor capacity*                                     | up to 18 t/h |
| Max. Transport distance                                | 70 m         |
| Pipe diameter  | 160 mm       |
| PTO speed  | 540 rpm      |
| Power demand for PTO                                   | min. 37 kW   |



## ELECTRICALLY DRIVEN SUCTION AND FORCE PNEUMATIC CONVEYORS

| <b>T 449/2 with three stage fan</b>                          |              |
|--|--------------|
| <b>Standard equipment</b>                                    |              |
| Flexible polyurethane hose with suction nozzle + clamp 160mm |              |
| Pipe 2m + clamp 160mm  |              |
| Bend 900 + clamp 160mm                                       |              |
| <b>Additional equipment</b>                                  |              |
| Dust removal system  |              |
| <b>Technical specification</b>                               |              |
| Conveyor capacity*   | up to 25 t/h |
| Max. Transport distance                                      | 70 m         |
| Engine power   | 37 kW        |
| Pipe diameter  | 160 mm       |



| <b>T 450 with four stage fan</b>                             |           |
|--|-----------|
| <b>Standard equipment</b>                                    |           |
| Flexible polyurethane hose with suction nozzle + clamp 160mm |           |
| Pipe 2m + clamp 160mm  |           |
| Bend 900 + clamp 160mm                                       |           |
| <b>Technical specification</b>                               |           |
| Conveyor capacity*   | do 18 t/h |
| Max. Transport distance                                      | 70 m      |
| Engine power   | 22 kW     |
| Pipe diameter  | 160 mm    |

\* The conveyor's performance depends on the type and moisture content of the grain, as well as the length of the transport system.



| T 207, T 207/1, T 207/2, T 207/3                              |               |               |               |               |
|---|---------------|---------------|---------------|---------------|
| Standard equipment  |               |               |               |               |
| Flexible polyurethane hose with suction nozzle + clamp 160 mm |               |               |               |               |
| Pipe 2m + clamp 160mm   |               |               |               |               |
| Bend 90 + clamp 160mm   |               |               |               |               |
| Capacity in t/h   | L-10m<br>H-3m | L-20m<br>H-3m | L-30m<br>H-3m | L-40m<br>H-3m |
| T 207 with engine 7,5 kW                                      | 4,5           | 3,5           | 2,5           | 2,2           |
| T 207/1 with engine 11 kW                                     | 9,5           | 8,7           | 8,0           | 7,0           |
| T 207/2 with engine 15 kW                                     | 14,5          | 13,0          | 12,0          | 11,0          |
| T 207/3 with engine 7,5 kW                                    | 6,5           | 6,25          | 5,5           | 4,5           |



## FORCE PNEUMATIC CONVEYOR WITH ELECTRIC DRIVE

Force conveyors from the T 207/T, T 207/1/T and T 207/2/T series are created by removing suction nozzle from T207, T 207/1, T 207/2 models and mounting charging hopper on the feeder.

| T 378/2 with injector, T 207/T, T 207/1/T, T 207/2/T |               |               |               |               |
|--|---------------|---------------|---------------|---------------|
| Standard equipment                                   |               |               |               |               |
| Pipe 2m + clamp 160mm                                |               |               |               |               |
| Bend 90 + clamp 160mm                                |               |               |               |               |
| Capacity in t/h                                      | L-10m<br>H-3m | L-20m<br>H-3m | L-30m<br>H-3m | L-40m<br>H-3m |
| T 378/2 with injector 7,5 kW                         | 5,3           | 4,5           | 4,0           | 3,5           |
| T 207/T with engine 7,5 kW                           | 8,0           | 5,5           | 4,0           | 3,6           |
| T 207/1/T with engine 11 kW                          | 16,0          | 13,5          | 11,0          | 9,5           |
| T 207/2/T with engine 15 kW                          | 19,0          | 17,0          | 15,5          | 14,5          |



T 378/2 with injector



T 207/T, T 207/1/T, T 207/2/T

## SEPARATORS

Separator is used to remove light impurities from cereal grains, legume seeds, pellets, expanded clay (keramzite) etc. Preliminary cleaning helps to prevent many adverse effects.

| M 502  |              |
|--|--------------|
| Additional equipment                                     |              |
| Pipe 2m dividing cleaning cyclone from dedusting cyclone |              |
| Set of legs for dedusting cyclone                        |              |
| Technical specification                                  |              |
| Capacity   | up to 15 t/h |
| Engine power   | 3 kW         |
| Weight   | 130 kg       |

| M 502/1  |              |
|--|--------------|
| Standard equipment                                       |              |
| Pipe 2m dividing cleaning cyclone from dedusting cyclone |              |
| Set of legs for dedusting cyclone                        |              |
| Technical specification                                  |              |
| Capacity   | up to 30 t/h |
| Engine power   | 7,5 kW       |
| Weight   | 295 kg       |

| M 502/2                 |               |
|-------------------------|---------------|
| Technical specification |               |
| Capacity                | up to 30 t/h  |
| Engine power            | 3 kW + 2,2 kW |
| Weight                  | 230 kg        |



## SCREW CONVEYORS WITH ELECTRIC DRIVE

Screw conveyors commonly known as augers are used for transporting grain, cereal seeds and bulk materials (such as cement, wood chips, pellets, coal dust or coal pea) over short distances. They are typically used for loading silos, spreaders, seeders, filling bags and similar applications. The internal screw formed from a solid flat bar along with the use of ball bearings, ensures long-lasting and trouble-free operation. Valued for their simple, robust design and versatility.

| T 206/2, T 206/3, T 206/4                     |             |           |             |
|---|-------------|-----------|-------------|
| Standard equipment                            |             |           |             |
| Charging hopper (T 206/4)                     |             |           |             |
| Four wheeled trolley with lift (T 206/4)      |             |           |             |
| Additional equipment                          |             |           |             |
| Lengthening segment 1 and 2 m                 |             |           |             |
| Charging hopper (for T 206/2 and T 206/3)     |             |           |             |
| Steel line reinforcement                      |             |           |             |
| Flexible discharge                            |             |           |             |
| Rotary discharge                              |             |           |             |
| Two wheeled trolley (for T 206/2 and T 206/3) |             |           |             |
| Large trolley (for T 206/2 and T 206/3)       |             |           |             |
| Technical specification                       |             |           |             |
| Parameter                                     | T 206/2     | T 206/3   | T 206/4     |
| Capacity                                      | 16 - 24 t/h | 4 - 9 t/h | 16 - 24 t/h |
| Working length                                | 4 m         | 4 m       | 4 m         |
| Max. Conveyor lifting height                  | 1,7 m*      | 1,7 m*    | 2,8 m       |
| Max. Operating angle                          | 60°         | 60°       | 60°         |
| Inner diameter                                | 140 mm      | 100 mm    | 140 mm      |
| Engine power                                  | 3 kW        | 1,5 kW    | 3 kW        |

\*Related to the conveyor installed on 2 wheeled trolley



| T 447/1, T 447/2, T 447/3 |              |              |              |
|---------------------------|--------------|--------------|--------------|
| Additional equipment      |              |              |              |
| Flexible discharge 200mm  |              |              |              |
| Charging hopper           |              |              |              |
| Lengthening segment 3 m   |              |              |              |
| Technical specification   |              |              |              |
| Parameter                 | T 447/1      | T 447/2      | T 447/3      |
| Wheat capacity            | up to 60 t/h | up to 60 t/h | up to 60 t/h |
| Working length            | 8 m          | 11 m         | 14 m         |
| Inner diameter            | 200 mm       | 200 mm       | 200 mm       |
| Engine power              | 7,5 kW       | 7,5 kW       | 7,5 kW       |



## SCREW CONVEYORS WITH HYDRAULIC DRIVE

T 206/5 and T 458 conveyors are available in either galvanized or stainless steel versions. T 461 conveyor is offered in a painted version. After simple assembly, T 206/5 conveyor works perfectly with seeders from various manufacturers.

| T 206/5                 |               |
|-------------------------|---------------|
| Technical specification |               |
| Capacity                | up to 25 t/h  |
| Working length          | 3/4 m         |
| Inner diameter          | 140 mm        |
| Tractor pump capacity   | 20 - 40 l/min |



| T 458                   |               |
|-------------------------|---------------|
| Technical specification |               |
| Capacity                | up to 25 t/h  |
| Working length          | 4 m           |
| Inner diameter          | 140 mm        |
| Tractor pump efficiency | 20 - 40 l/min |



| T 461                   |               |
|-------------------------|---------------|
| Technical specification |               |
| Capacity                | up to 40 t/h  |
| Working length          | 4,8 m         |
| Inner diameter          | 200 mm        |
| Tractor pump efficiency | 20 - 40 l/min |



The T 213 conveyor is specially designed for unloading or transloading bulk materials such as grain, granular fertilizers from monocoque trailers to other road transport vehicles such as TIR trucks. It is available in a version with electronic control.

| <b>T 213</b>                   |                |
|--------------------------------|----------------|
| <b>Technical specification</b> |                |
| Capacity                       | up to 150 t/h  |
| Hydraulic hose length          | 1,8 mb         |
| Working length                 | 5200 mm        |
| Total conveyor`s length        | 5800 mm        |
| Housing inner diameter         | 325 mm         |
| Tractor pump capacity          | 70 - 100 l/min |



| <b>Reloading hopper T 057</b>  |              |
|--------------------------------|--------------|
| <b>Technical specification</b> |              |
| Capacity*                      | up to 30 t/h |
| Conveyor working length        | 4,8 m        |
| Tank width                     | 2,9 m        |
| Tractor pump capacity          | min 30l/min  |
| Tank capacity                  | 2,2m3        |

\* The performance of T 461 conveyor depends on the type and moisture content of the grain, as well as the length of the transport set



## FERTILIZER SPREADERS

Designed for the application of granular and powdery mineral fertilizers, fertilizer mixtures, lime and even sand and salt. With orchard attachment it is ideal for use in gardens and vineyards, while the municipal attachment transforms it into a versatile spreader for winter road maintenance. Available in three hopper variants: polyester laminate, stainless steel (INOX) and black metal sheet, powder coated.

| <b>N 031, N 031/1</b>                               |             |             |
|---|-------------|-------------|
| <b>Additional equipment</b>                         |             |             |
| Hydraulic slide INOX                                |             |             |
| Municipal attachment                                |             |             |
| Narrow spreading attachment                         |             |             |
| Orchard spreading attachment                        |             |             |
| Filter mesh, Canvas cover, Wheel trolley            |             |             |
| <b>Technical specification</b>                      |             |             |
| Parameter   | N 031       | N 031/1     |
| Spreading system                                    | centrifugal | centrifugal |
| Hopper capacity                                     | 320 l       | 400 l       |
| Weight  | 125 kg      | 130 kg      |
| PTO speed   | 540 rpm     | 540 rpm     |
| Spreading width(granular/powdery)                   | 8 m         | 8 m         |
|   | 5 m         | 5 m         |
| Spreading efficiency (granular/powdery/crystalline) | 6 ha/h      | 6 ha/h      |
|   | 4 ha/h      | 4 ha/h      |



## DOUBLE DISC FERTILIZER SPREADERS

Double disc fertilizer spreaders are equipped with a vibrating system replacing the agitator and with automatic adjustment of the point of application of fertiliser to the spreading disc. The FRUIT fertilizer spreader is designed for the application of mineral fertilisers in plantations, orchards, fields and meadows. The changeover of the spreader from field to orchard and vice versa takes less than 1 minute.

| FRUIT                                  |                        |
|--|------------------------|
| Standard equipment                     |                        |
| Stainless steel charging hopper        |                        |
| Hydraulic control                      |                        |
| PTO telescopic shaft                   |                        |
| Vanes set for 12 working width         |                        |
| Orchard spreading attachment           |                        |
| Border spreading attachment            |                        |
| Road lighting                          |                        |
| Additional equipment                   |                        |
| 400 l extension                        |                        |
| Canvas cover                           |                        |
| Technical specification                |                        |
| Hopper capacity without/with extension | 600/1000l              |
| Working width in field operation       | 12 m                   |
| Row spreading width                    | from 2 to 5 m          |
| per side Fertilizer delivery rate      | from 0,3 to 400 kg/min |
| PTO speed                              | 540 rpm                |
| Weight without/with extension          | 170 / 200 kg           |



| COMPACT   |                        |
|---|------------------------|
| Standard equipment                                      |                        |
| Stainless steel charging hopper                         |                        |
| Hydraulic control                                       |                        |
| PTO telescoping shaft                                   |                        |
| Vanes set for 15 or 18 m working width                  |                        |
| Road lighting   |                        |
| Additional equipment                                    |                        |
| 400 l extension   |                        |
| Canvas cover  |                        |
| Calibration chute                                       |                        |
| Border spreading attachment                             |                        |
| Technical specification                                 |                        |
| Hopper capacity without/with extension                  | 600/1000l              |
| Working width in field operation without/with extension | 15 / 18 m              |
| Fertilizer delivery rate                                | from 0,3 to 400 kg/min |
| PTO speed   | 540 rpm                |
| Weight without/with extension                           | 170 / 200 kg           |





APOLLO fertilizer spreader is designed for surface application of mineral fertilizers on arable fields and meadows. It can also be used for late-stage fertilization. The spreader operates as a mounted unit on the three-point hitch of tractor cat II.

| <b>APOLLO</b>                                       |                        |
|---|------------------------|
| <b>Standard equipment</b>                           |                        |
| Stainless steel charging hopper                     |                        |
| Hydraulic control                                   |                        |
| PTO telescopic shaft                                |                        |
| Vanes set for 15 or 18m working width Road lighting |                        |
| <b>Additional equipment</b>                         |                        |
| Extension increasing hopper capacity to 1350l       |                        |
| Canvas cover  |                        |
| Calibration chute                                   |                        |
| Border spreading attachment                         |                        |
| <b>Technical specification</b>                      |                        |
| Hopper capacity without/with extension              | 1000/1350l             |
| Working width in field operation                    | 15/18m                 |
| Fertilizer delivery rate                            | from 0,3 to 400 kg/min |
| PTO speed   | 540 rpm                |
| Weight  | 235 kg                 |



## HAMMER MILL

Hammer mill is designed for crushing common cereal grains and seeds into feed for livestock. It is intended for use on small farms.

| <b>H 115</b>                   |                |
|--------------------------------|----------------|
| <b>Technical specification</b> |                |
| Capacity                       | up to 900 kg/h |
| Engine power                   | 7,5 kW         |
| Hopper capacity                | 85 l           |
| Sieve mesh size                | 5 - 8 mm       |



## HARROWS

Heavy-duty U 224 tooth harrow is designed to be coupled with three-point hitch of cat II and III, class 1,4 and 2,0 tractors. It is intended for levelling soil after plowing, breaking and crushing clods of earth, destroying weeds, bindweed and other field work. As one of the few, we use heat-treated tooth that meet Polish standards for wear resistance and hardness. In the case of the U 348/1 and U 224 models, the outer sections of the harrow are hydraulically foldable.

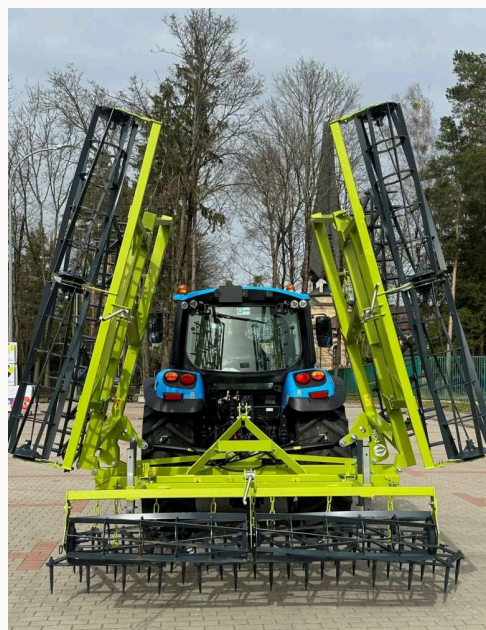
| U 348                   |        |
|-------------------------|--------|
| Technical specification |        |
| Working width           | 3,2 m  |
| Tillage depth           | 12 cm  |
| Tooth type              | PH 20  |
| Number of sections      | 3 pcs. |



| U 348/1                 |        |
|-------------------------|--------|
| Technical specification |        |
| Working width           | 5,3 m  |
| Tillage depth           | 12 cm  |
| Tooth type              | PH 20  |
| Number of sections      | 5 pcs. |



| U 224                   |        |
|-------------------------|--------|
| Additional equipment    |        |
| String roller           |        |
| Technical specification |        |
| Working width           | 7 m    |
| Tillage depth           | 12 cm  |
| Tooth type              | PH 20  |
| Number of sections      | 5 pcs. |





Pracowniczy Ośrodek Maszynowy w Augustowie Sp. z o.o.  
4 Tytoniowa Street, 16-300 Augustów  
mob. +48 504 835 203, +48 515 028 027  
Factory service mob. + 48 668 676 216

[www.pom.com.pl](http://www.pom.com.pl)

